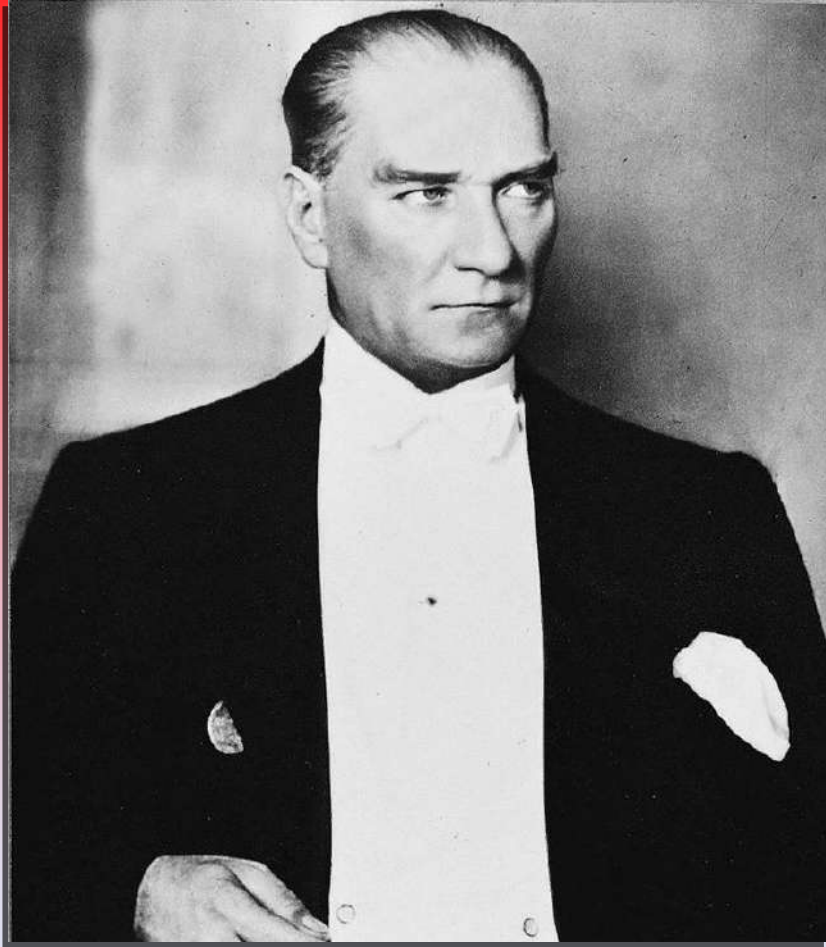




TURKEY



TURKEY REPUBLIC



LANGUAGE AND ALPHABET



TURKISH LIRA



TURKEY'S LOCATION



PROVINCES



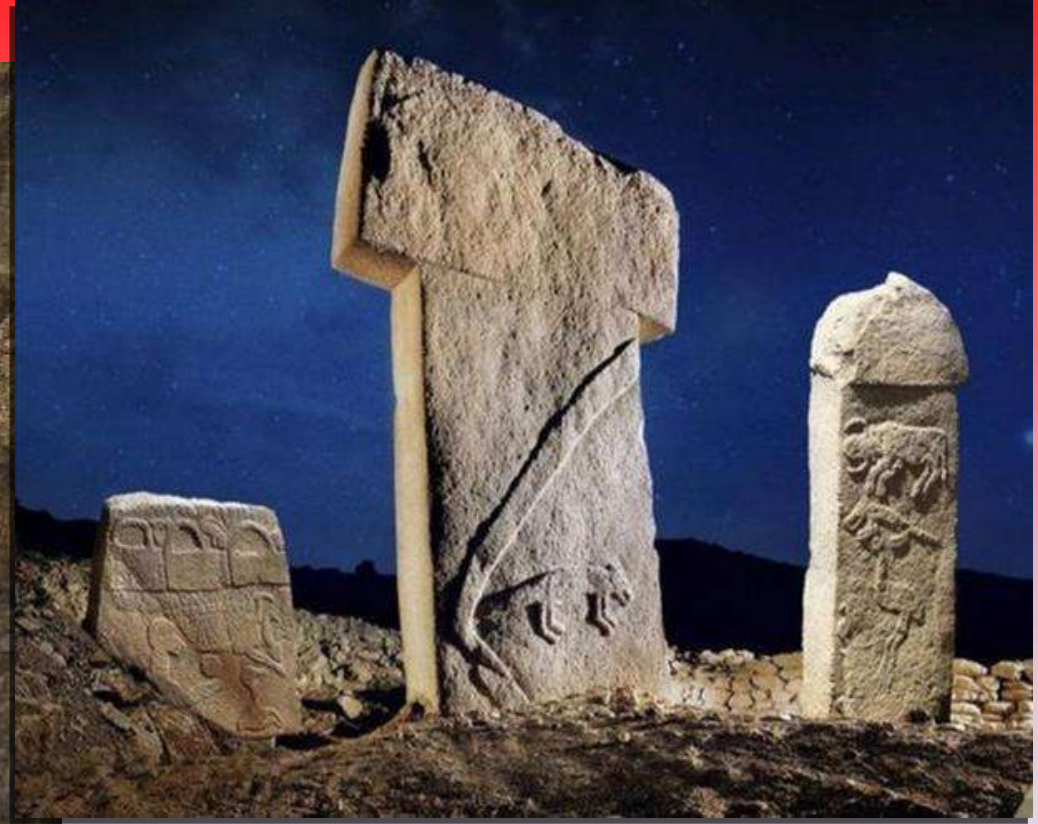
REGIONS



PLACES TO VISIT



ANITKABİR



GÖBEKLİTEPE



CAPPADOCIA



PAMUKKALE



SUMELA MONASTERY



MOUNT NEMRUT



EPHESUS



MAIDEN'S TOWER



HAGIA SOPHIA



TOPKAPI PALACE



MAUSOLEUM AT HALICARNASSUS



TEMPLE OF ARTEMIS



TURKISH CUISINE





← KEBAB SARMA →



MANTI →



ÇİĞ KÖFTE →





TURKISH BREAKFAST AND COFFEE



BAKLAVA AND KUNEFE





TURKISH CULTURE



← Hacivat and Karagöz

Ebru (Paper Marbling) →





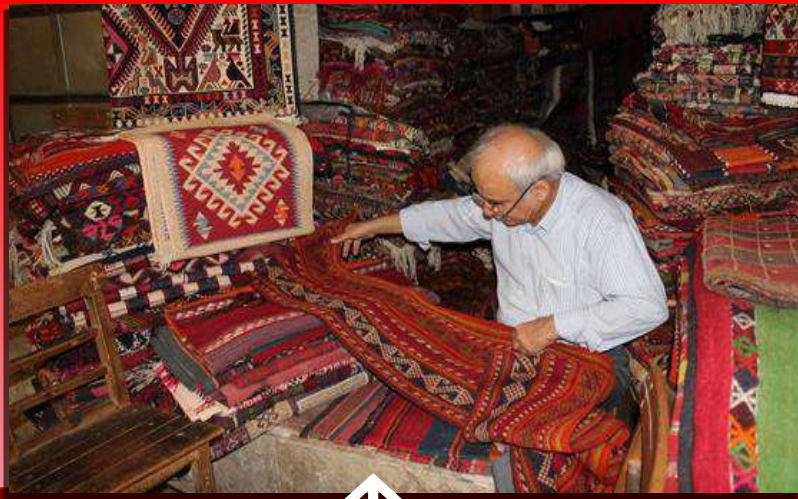
← Çini (Tile Art)



Turkish Miniature →



← Sema



Carpets & Kilims



Oil Wrestling



Traditional Clothes



Evil Eye



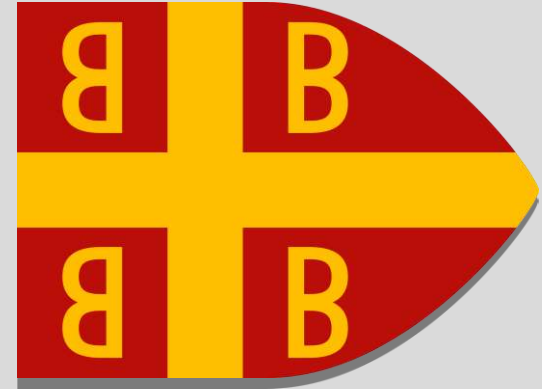
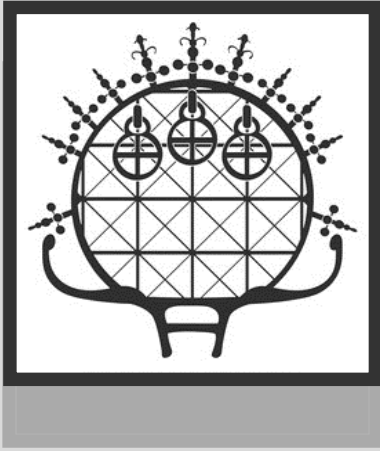


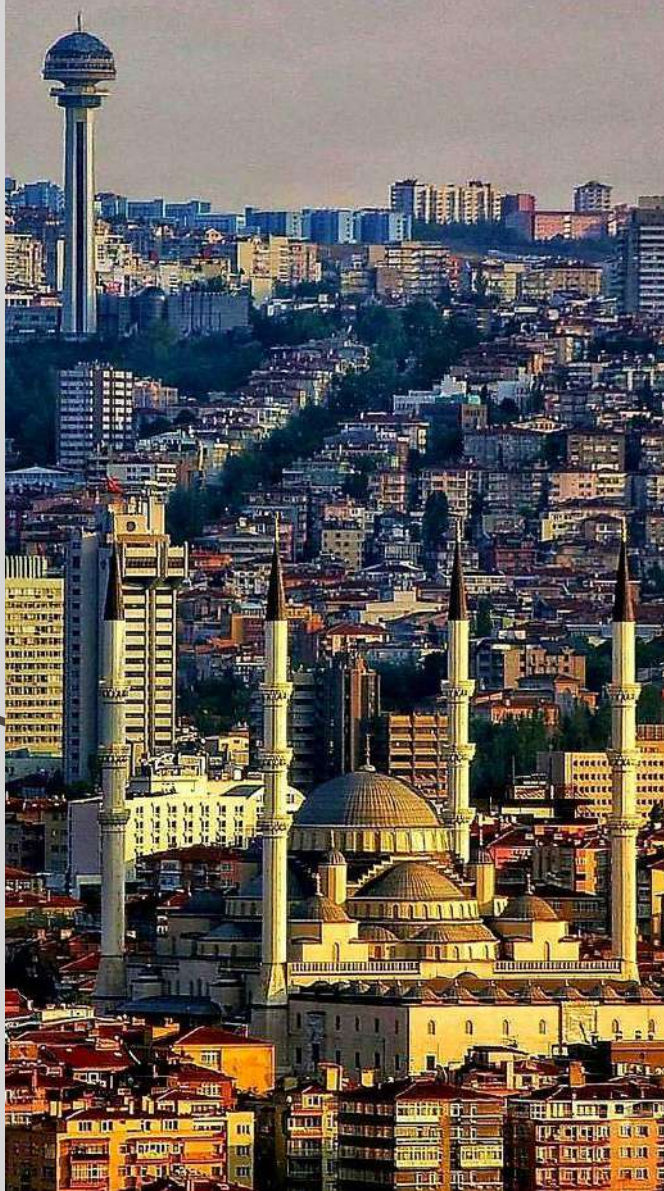
Ankara

06



CIVILIZATIONS

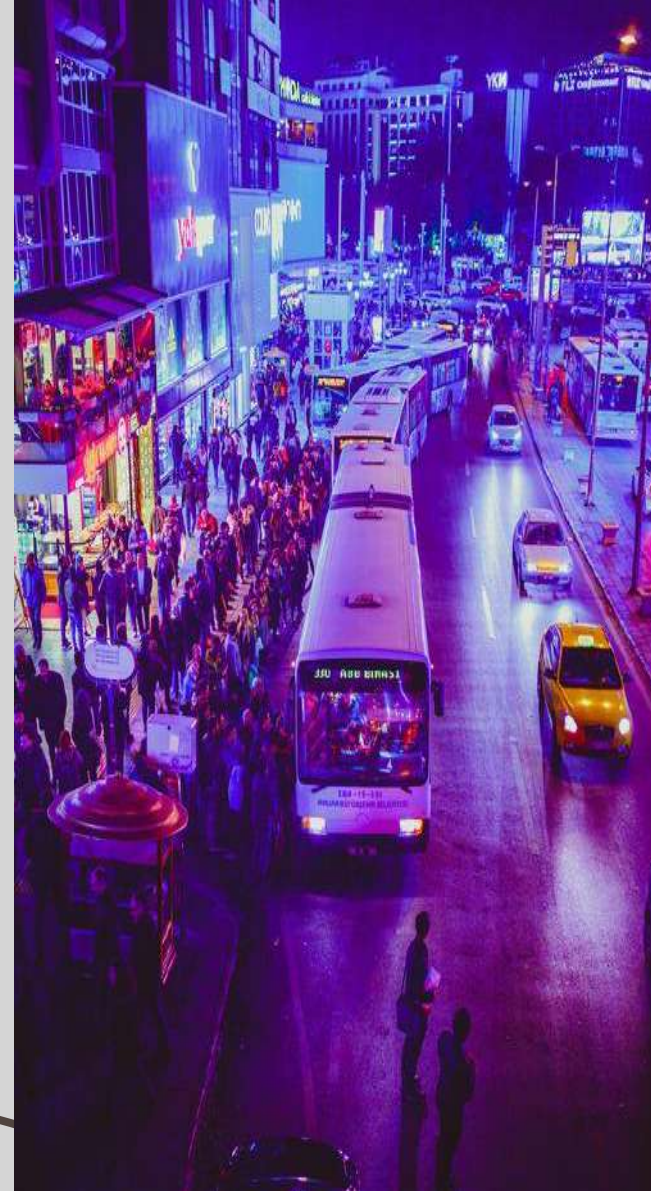




POPULATION



5.5 MILLION





ANGORA GOAT



ANGORA CAT

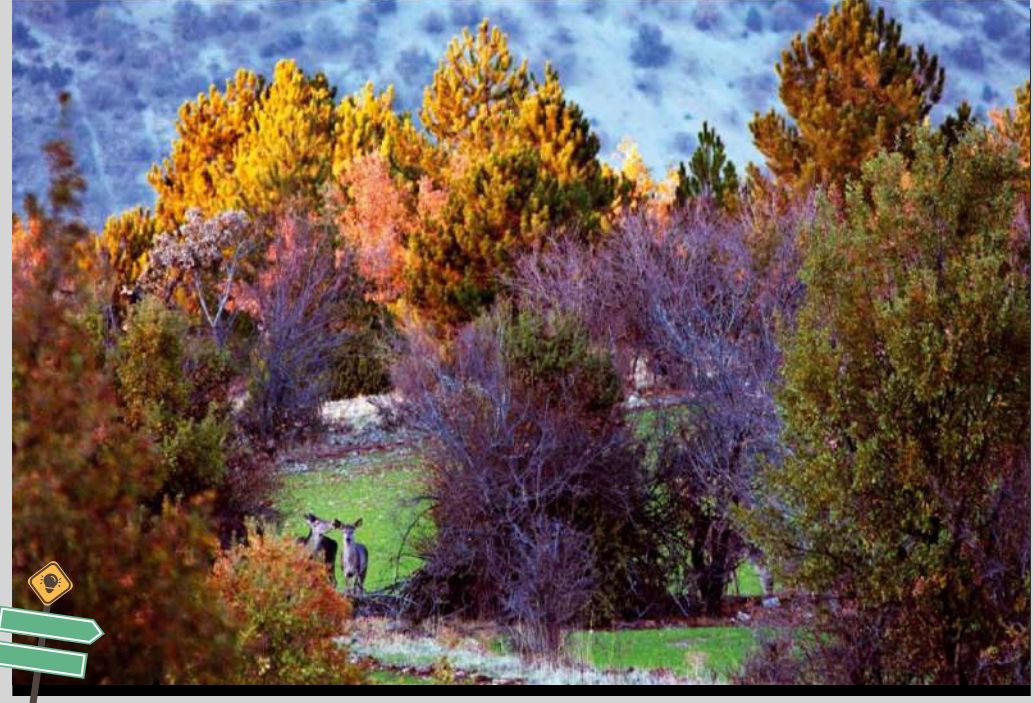




DONER

BAGEL





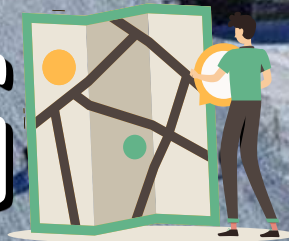


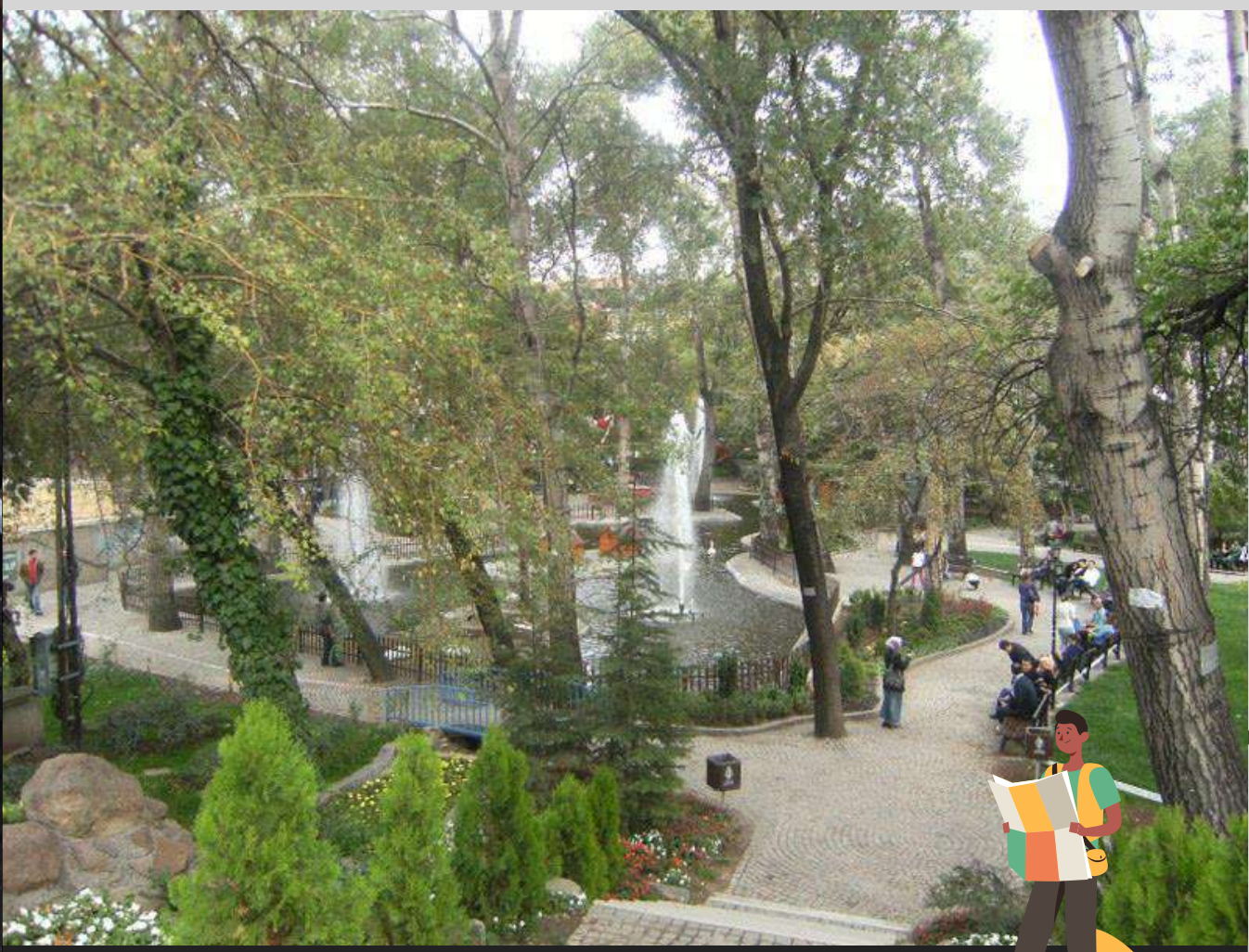
ANKARA CASTLE



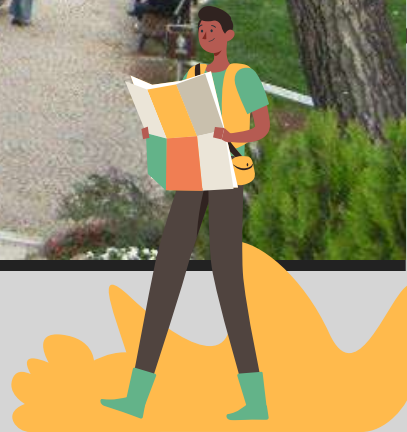


ELMADAG





SWAN PARK

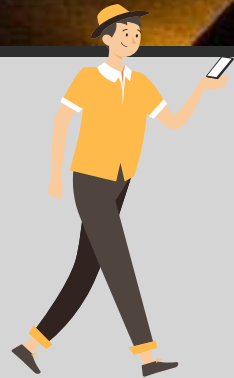




KIZILAY SQUARE



ANITKABIR



UNIVERSITIES



Our School Ayrancı Aysel Yüçetürk Anatolian Highschool

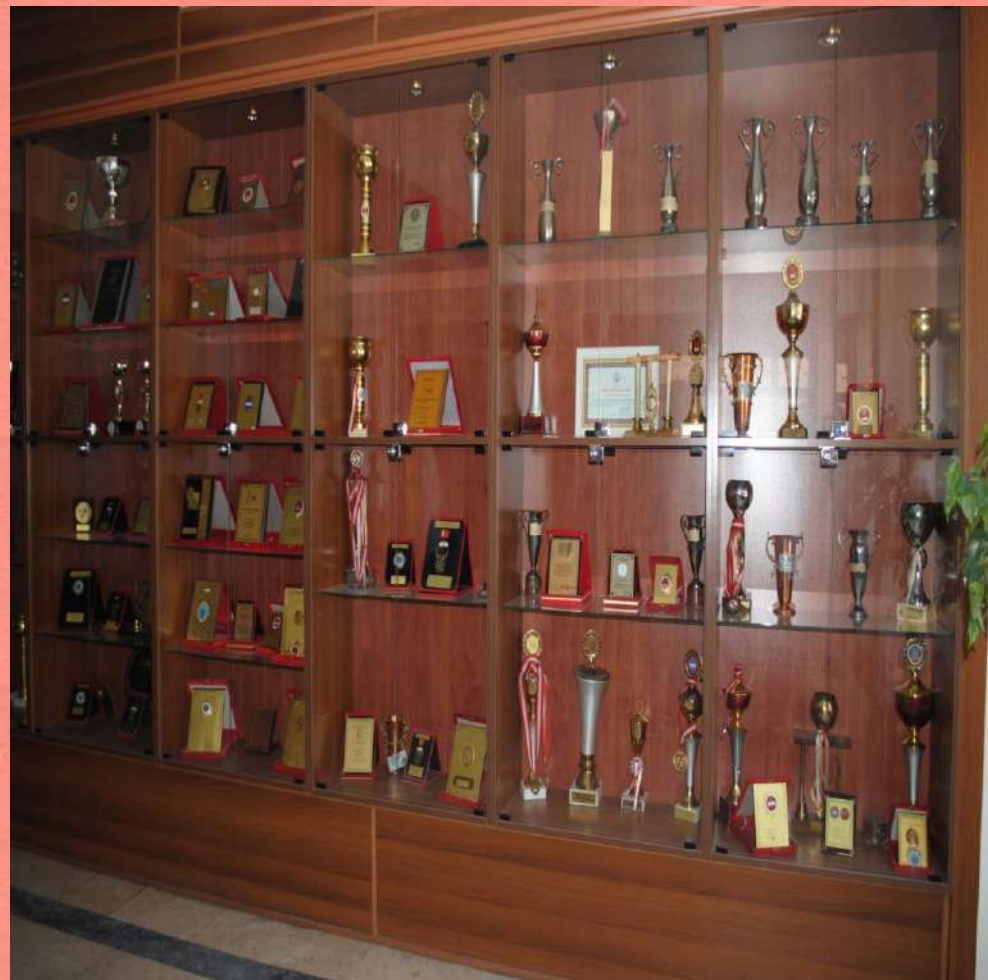








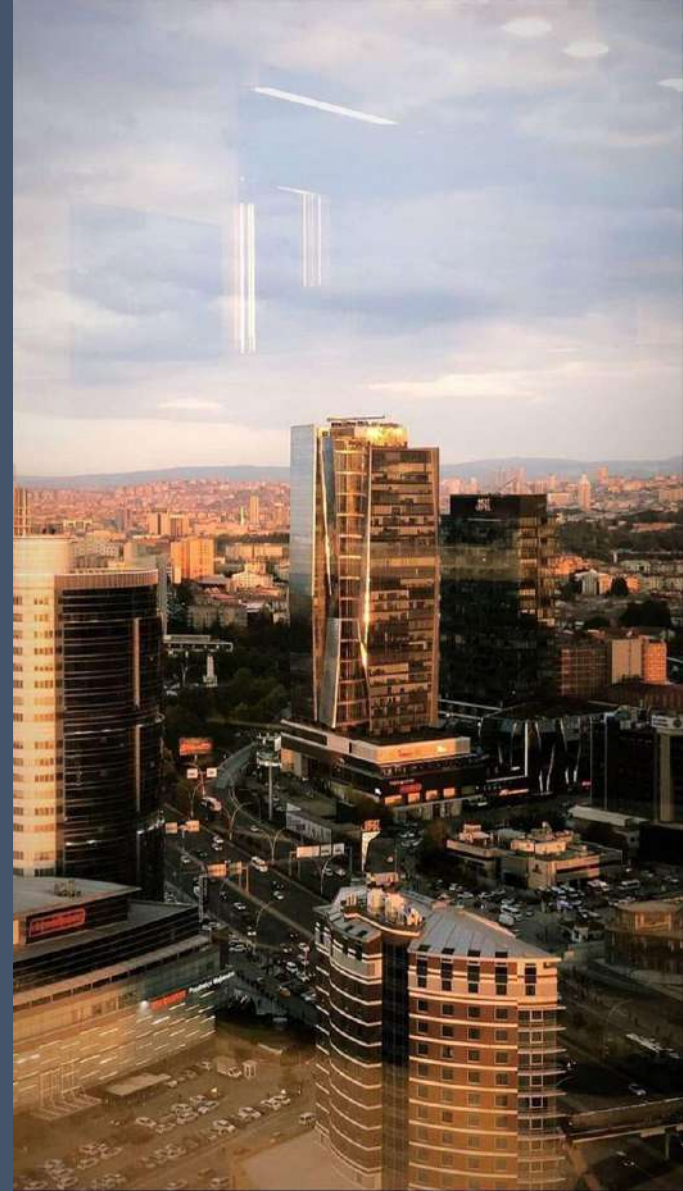


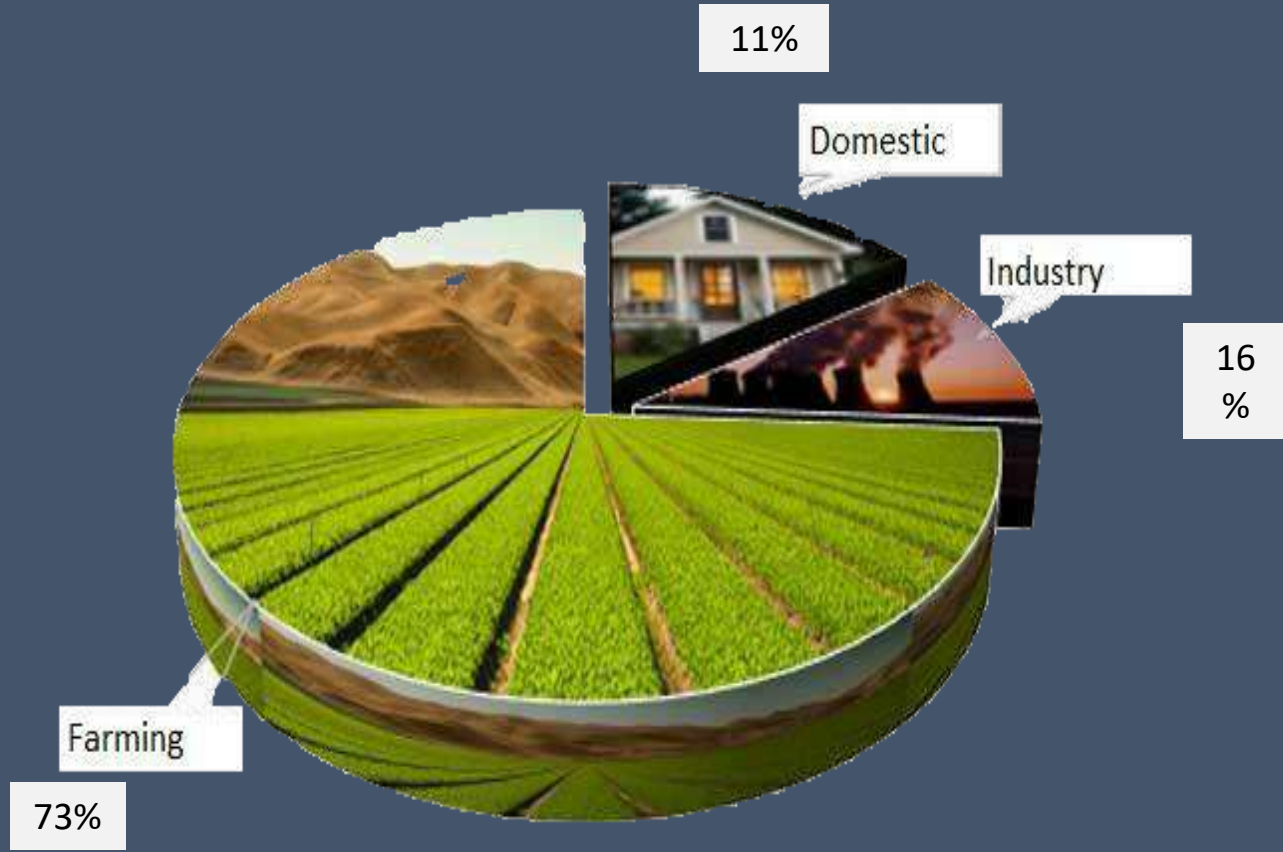




A scenic landscape featuring a wooden boat on a muddy shore next to a large body of water, with mountains in the background under a clear blue sky. The boat is positioned in the lower-left foreground, resting on a muddy bank. The water is calm and reflects the sky. In the background, there are rolling hills and mountains under a clear blue sky. The overall scene suggests a rural or natural setting.

WATER SITUATION IN TURKEY







Major Organizations



(General Directorate of State Hydraulic Works)

DSİ is in charge of calculating and deciding the amount of industrial and domestic waste and also taking the necessary actions.



LAKE MARMARA

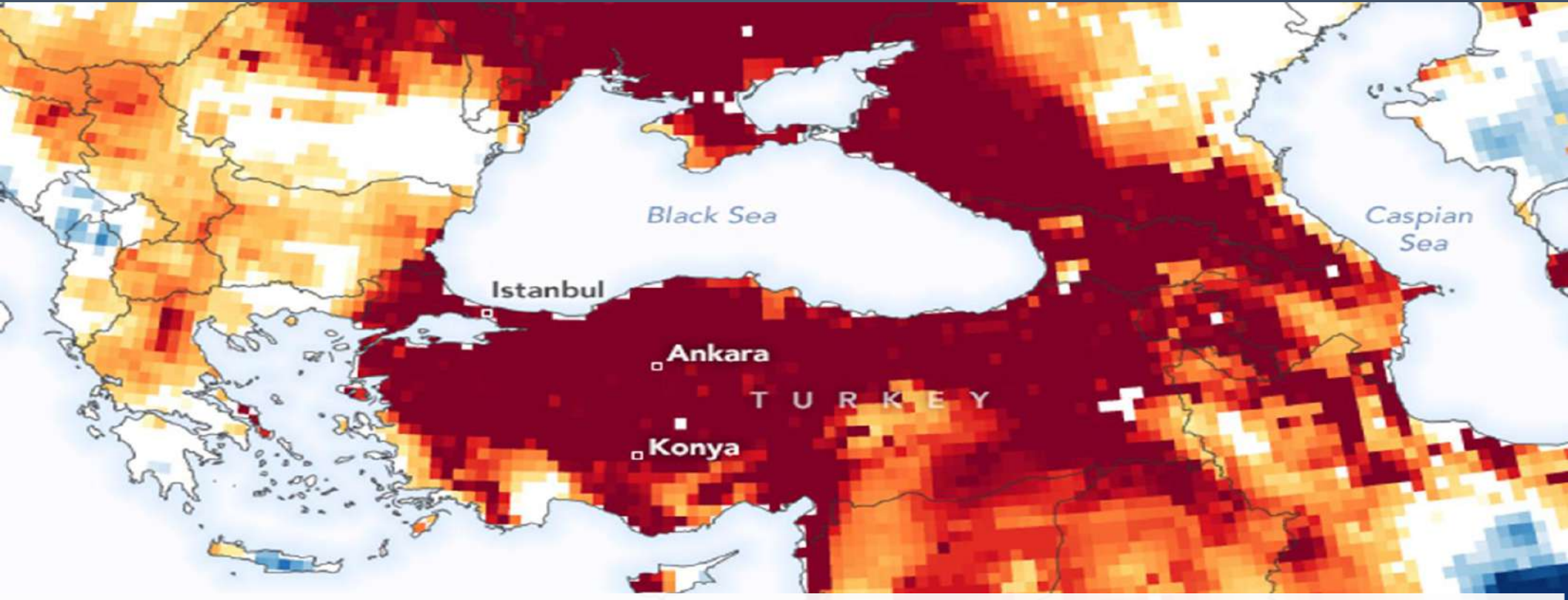


DAM OF SAZLIDERE



DAM OF OMERLI



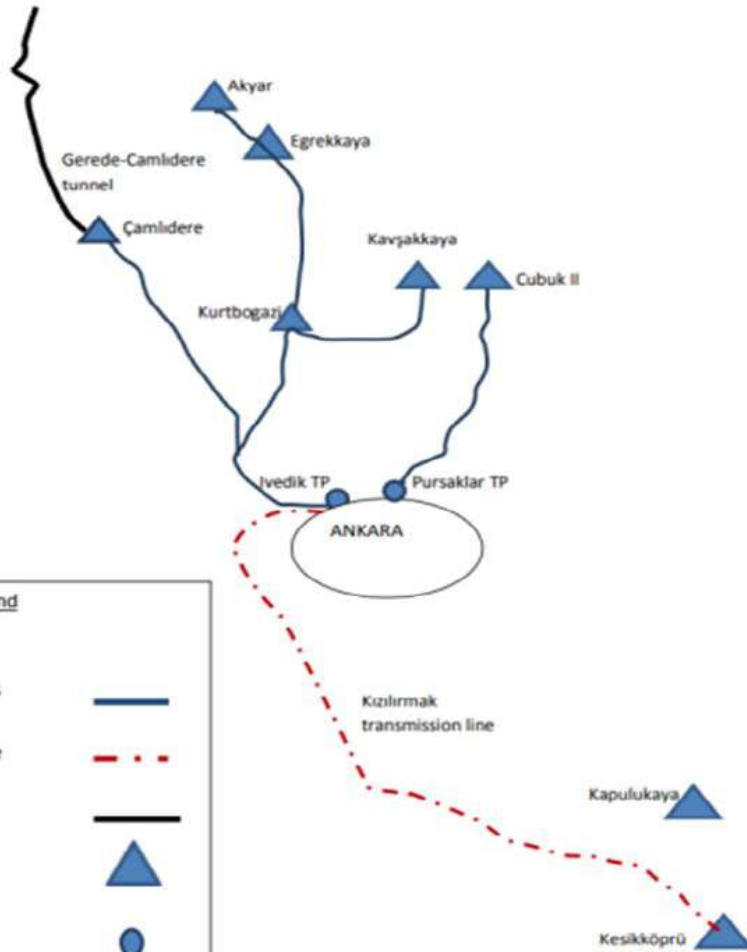


Mediterranean Sea

Blue areas have more water than usual, and orange and red areas have less.







Legend

Gravity transmission lines	—
Pumped transmission line	- - -
Tunnel transmission line	— (thick)
Dams	▲
Treatment plants	●



26.65%

DiKKAT!

SUSUZ KALABİLİRİZ.

ANKARA'DA BARAJLARIMIZIN
YÜZDE 80'İ BOŞ

ANKARA BAKAJ
DOLULUK ORANI
%20
(AKHT Kullanılabilir)
Su Yürdesi



Mansur

ANKARA BÜYÜKŞEHİR BELEDİYESİ

STRÖER

PEKİ SUYU ÇOK TÜKETENLER KİMLER?

- HAVUZUNU DOLDURANLAR
- ARABASINI YIKAYANLAR
- HOBİ BAHÇELERİNİ SULAYANLAR
- TARIMDA VAHŞİ SULAMA YAPANLAR



YÜZDE 16'LIK BİR KESİM, SUYUMUZUN YÜZDE 52'SİNİ TÜKETİYOR



Mansur

ANKARA BÜYÜKŞEHİR BELEDİYESİ

STRÖER





Dam Occupancy Rates of Metropolitans



İSTANBUL



%76,18 **Occupancy**



ANKARA



%32,57 **Occupancy**



İZMİR



%69,51 **Occupancy**









IF NOT USING THE TAP,TURN IT OFF!



RAINWATER TANK



AWARENESS BOARD



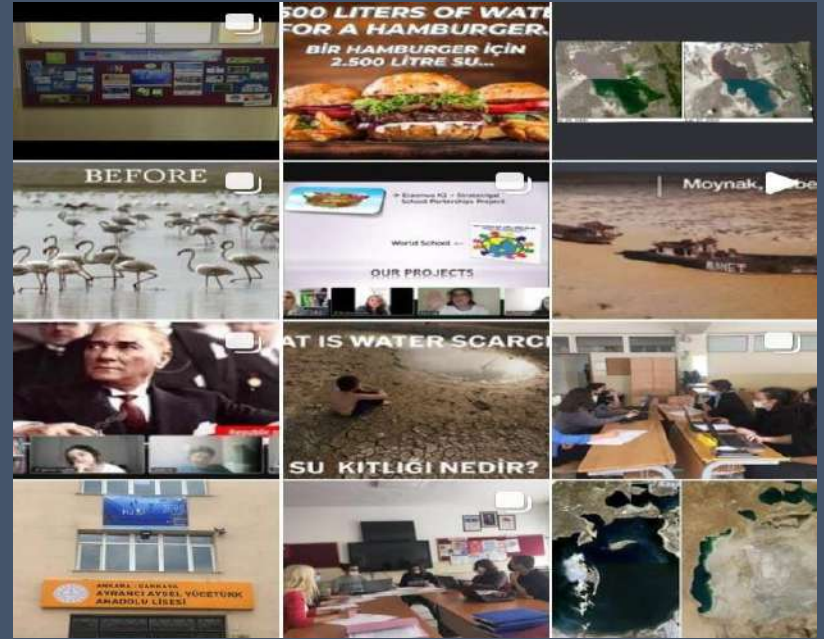
INSTAGRAM ACCOUNT

← erasmus_ka2_aayal_20... ⋮



24 Posts 288 Followers 160 Following

Erasmus+ KA2 2020 Turkey 🇹🇷
WATER IS NOT ONLY WATER, WATER IS OUR FUTURE!
Ayrancı Aysel Yücetürk Anatolian High School
In partnership with; 🇷🇺 🇮🇹 🇵🇹





As water is essential for life for our future we will always be depending on it.



***WATER IS
OUR
FUTURE,
OUR
HERITAGE.***



"Water is not only water, water is our future."

